

FaxPack™ 7.5.3

Plug-in for

FileMaker Pro & 4-Sight FAX



© 1996-2010 Soft Solutions, Inc. All Rights Reserved.

Published World-Wide by Soft Solutions, Inc.

Last updated on September 17, 2010.

# Disclosure

By installing this package, you are agreeing to be bound to the terms of this agreement.

## Soft Solutions, Inc. Software License

1. **GRANT OF LICENSE.** Soft Solutions grants to you, the Developer, the right to use the Soft Solutions software program FaxPack (the "SOFTWARE") on a single computer (i.e., with a single CPU), or on a LICENSED COMPUTER NETWORK. Each concurrent user on a network will be governed under the Deployment license purchased. Soft Solutions, Inc. as Licensor, grants to you, the LICENSEE, a non-exclusive, non-transferable right to use this Software subject to the terms of the license as described in the following sections:
  - A. You may make backup copies of the Software for your use provided they bear the Soft Solutions, Inc copyright notice.
  - B. You may use this software in a manner consistent with the license purchased. Please refer to the terms of your license at the 4-Sight FAX web site, located at <http://www.4sightfax.com>.
2. **COPYRIGHT.** The SOFTWARE is owned by Soft Solutions and is protected by United States copyright laws and international treaty provisions. Therefore, you must treat the SOFTWARE like any other copyrighted material (e.g., a book or musical recording) except that you may either (a) make one copy of the SOFTWARE solely for backup or archival purposes, or (b) transfer the SOFTWARE to a single hard disk provided you keep the original solely for backup or archival purposes. You may not copy the written materials accompanying the SOFTWARE.
3. **OTHER RESTRICTIONS.** You may not rent, lease or transfer the SOFTWARE. You may not reverse engineer, decimalize, or decompile the SOFTWARE.

**LIMITED WARRANTY.** Soft Solutions, Inc. warrants that (a) the SOFTWARE will perform substantially in accordance with the accompanying written materials for a period of ninety (90) days from the date of receipt. Any implied warranties on the SOFTWARE are limited to ninety (90) days and one (1) year, respectively. Some states do not allow limitations on duration of an implied warranty, so the above limitation may not apply to you.

**CUSTOMER REMEDIES.** Soft Solutions, Inc. entire liability and your exclusive remedy shall be, at Soft Solutions option, either: (a) return of the price paid or (b) repair or replacement of the SOFTWARE that does not meet Soft Solutions Limited Warranty. This Limited Warranty is void if failure of the SOFTWARE has resulted from accident, abuse, or misapplication. Any replacement SOFTWARE will be warranted for the remainder of the

original warranty period of thirty (30) days, whichever is longer.

**NO OTHER WARRANTIES.** Soft Solutions disclaims all other warranties, either express or implied, including but not limited to implied warranties of merchantability and fitness for a particular purpose, with respect to the SOFTWARE, the accompanying written materials, and any accompanying hardware. This limited warranty gives you specific legal rights. You may have other rights, which vary by locale.

**NO LIABILITY FOR CONSEQUENTIAL DAMAGES.** In no event shall Soft Solutions or its suppliers be liable for any damages whatsoever (including, without limitation, damages for loss of business profits, business interruption, loss of business information, or other pecuniary loss) arising out of the use of or inability to use this Soft Solutions product, even if Soft Solutions has been advised of the possibility of such damages. Because some states do not allow the exclusion or limitation of liability for consequential or incidental damages, the above limitation may not apply to you.

**Governing Law.** This entire agreement shall be governed by the laws of the State of Georgia within the USA.

FaxPack is a trademark of Soft Solutions, Inc. Apple is a registered trademark of Apple Computer, Inc.

Filemaker Pro and Filemaker Server are registered trademarks of Filemaker Pro, Inc.

Soft Solutions, Inc.

2900 Chamblee Tucker Road

Building 12, Suite 200

Atlanta, GA 30341 USA

# Table of Contents

Introduction .....	1
What's New in FaxPack Version 6, 7 & 7.5 .....	2
Command Overview .....	2
Product Registration, Server Selection and Login.....	2
Switching to the 4-Sight Fax Printer.....	3
Creating the Fax / Email message.....	4
Cover Page and Comments .....	4
Adding Message Attachments.....	4
Completing the Message.....	5
Message Details and Retrieval .....	5
Synchronizing FMP and the 4-Sight FAX Server Address Book.....	5
Managing Junk Faxes.....	6
Version Command.....	6
FileMaker Pro Command format and return (text) strings.....	6
Installation.....	7
What to Download .....	7
What to Install.....	7
Contents of the Installation.....	7
4-Sight FAX Server and Configuration .....	9
Server Setup: .....	9
Message Control .....	10
FSFX_Register.....	10
FSFX_Version.....	11
FSFX_StartMessage .....	12
FSFX_AddRecipient .....	14
FSFX_AddComment.....	18
FSFX_SendMessage.....	19

FSFX_AbandonMessage .....	20
FSFX_GetItemStatus.....	21
FSFX_AddEnclosure .....	23
Printer Control .....	25
FSFX_SwitchPrinter .....	25
FSFX_PreparePrint .....	26
Server Control .....	27
FSFX_ServerLookup .....	27
FSFX_ServerLogin.....	28
FSFX_GetCoverPages .....	30
Queue Access.....	31
FSFX_GetQueueListing.....	31
FSFX_GetRowColumn .....	35
FSFX_GetFaxTiff .....	36
FSFX_ArchiveItem .....	37
Image Control.....	39
FSFX_GetTiffInfo .....	39
FSFX_ConvertTiff.....	39
Address Book.....	42
FSFX_GetContact .....	42
FSFX_ModifyContact.....	45
FSFX_AddContact.....	48
FSFX_DeleteContact.....	50
Block List.....	51
FSFX_AddToBlockList.....	51
FSFX_DeleteFromBlockList.....	53
Command Summary .....	55
Error Codes.....	57
Frequently Asked Questions (FAQ) .....	61

4-Sight FAX Sample Configuration .....	62
Contact Information.....	62
Index.....	63

# Introduction

Congratulations on your choice of FaxPack! An industrial strength fax solution, FaxPack is used in applications worldwide demanding direct and seamless database faxing and email capabilities. With FaxPack, FMP Developers can automate direct messaging capabilities for their users in their Filemaker Pro application without the need for the 4-Sight FAX client.

Below is a short list of how FaxPack is being used in database applications to simplify and improve the lives of its users:

- Emergency weather fax broadcasting
- Stock alert notification system
- Physician's stress and EKG fax notification
- Hospital information system w/ fax integration
- Order entry / pick list fax notification
- Hotel reservations fax confirmation
- Purchase order request system
- Patient medical record requests w/ automated fax-back and email delivery
- Voice-activated auto repair schematics system providing fax-back to auto service and repair centers
- Physician's prescription (Rx) fax-in system
- Software company invoice fax system
- Restaurant weekly lunch menu specials fax blast software
- Newspaper classified advertisements with fax / email review & confirmation

# What's New in FaxPack Version 6, 7 & 7.5

FaxPack versions 6, 7 & 7.5 introduce a number of new commands and features enabling database developers to:

- Retrieve details for entire fax / email queue listings.
- Retrieve individual faxes as TIFF files.
- Convert fax TIFF files into any of 5 alternative file formats.
- Have direct access to 4-Sight FAX Servers Smart dialing capabilities.
- Utilize permanent unique numbers for each fax (incoming and/or outgoing).\*
- Extend fax merge capabilities with access to 17 fields from the server address book.
- Add, update or delete FAX server-based address books directly from FMP.
- Download the entire 4-Sight FAX Server Address book to a local text file.
- Add or remove company fax numbers from the Fax Server Block list (feature).
- Send either fax or email messages (or both concurrently).
- Have access to any fax or email message status.
- Archival capabilities for one or many faxes (available in version 7.5).

\* Prior to 4-Sight FAX and FaxPack version 7, the 4-Sight FAX Server software used a dynamic number identification (id) system where fax id numbers changed each time the 4-Sight FAX server was restarted. Under 4-Sight FAX/FaxPack 7 and later, a permanent unique numbering system is in place. This permits database applications to now create, retrieve and delete faxes using permanent, 100% accurate queue information.

## Command Overview

Before describing the FaxPack commands in detail, it will be helpful to overview the purpose, use and basic steps to follow in programming your fax solution. The 4-Sight FAX server permits a 4-Sight FAX client and a Filemaker Pro application using FaxPack to run concurrently on the same machine with the same user[name] using the same TCP/IP address.

### ***Product Registration, Server Selection and Login***

The **FSFX\_Register** command must first be called to allow uninterrupted access to the FaxPack development commands (without time limits). The 4-Sight FAX server that transmits the completed message must be identified in your session before a message can be sent.

The FAX server can be identified explicitly using the **FSFX\_ServerLogin** command along with a User name and password. The **FSFX\_ServerLookup** command can be used to search for a FAX server on the local network.

The **FSFX\_ServerLogin** command can optionally validate the information. The **FSFX\_ServerLogin** parameter values are made available to over a half dozen FaxPack commands that require log-in access dynamically. Each of these commands logs in and logs out of the server using the **FSFX\_ServerLogin** parameter values. A valid user name and password are checked against the 4-Sight FAX Server before any faxes are created and are a log-in requirement.



**IMPORTANT:** With FaxPack, users are logged in as certain FaxPack commands are executed and logged out as FaxPack commands are completed. With the 4-Sight FAX Client software, however, users login and remain logged in until they log out. The same User from the same IP address can be simultaneously logged in more than once through the 4-Sight FAX Client and through FaxPack commands from within FMP.

### ***Switching to the 4-Sight Fax Printer***

The **FSFX\_SwitchPrinter** command allows you to procedurally alternate between the 4-Sight FAX printer driver and the user's selected printer, without opening the Macintosh OS X "Print Center" or the Windows printer Control Panel. When running under Mac OS X, version 10.3 or later must be installed in order to use the "**FSFX\_SwitchPrinter**" command. The **FSFX\_PreparePrint** command communicates directly with the 4-Sight FAX print driver. This command tells FaxPack to capture the subsequent FMP print job into a temporary Tiff file for transmission to the 4-Sight FAX server.



## ***Creating the Fax / Email message***

A fax / email message (message) is built with several FaxPack calls. To begin, the FMP developer should call the **FSFX\_StartMessage** command to provide basic sender and sending information. A “message” in this context refers to either a fax or email, generated through a FMP print job for transmission to one or more recipients. This command allocates the memory to store information about the message and its contents.

One or more destination addresses are then specified for the current message by calling the **FSFX\_AddRecipient** command. You must issue this call at least once, to specify at least one destination address, but there is no limit to the number of additional calls/destinations that may be specified. This command allocates the memory to store information about the message recipients, their fax numbers and associated information.

## ***Cover Page and Comments***

The **FSFX\_GetCoverPages** command will provide the FMP Developer with the names of the Fax Server cover pages (up to 14 possible cover page names). The **FSFX\_AddComment** command can optionally be used to specify a text comment for the fax cover page of the current fax message.

## ***Adding Message Attachments***

An FMP print job can be added as an attachment to the current fax message that began with **FSFX\_StartMessage**. The additional command order to do so is as follows:

- 1) Switch the default printer to 4-Sight Fax using **FSFX\_SwitchPrinter**.
- 2) Call the **FSFX\_PreparePrint** command.
- 3) Print from FMP.
- 4) Repeat steps 2-4 for more attachments.
- 5) Switch the default printer back using **FSFX\_SwitchPrinter**. Note that this technique assumes FMP will print to the default printer.

## ***Completing the Message***

Finally, the **FSFX\_SendMessage** command is called to build the message and send it to the 4-Sight FAX server for final processing and transmission. Alternatively, the **FSFX\_AbandonMessage** command can be used to dispose of the current message without transmitting it. The **FSFX\_SendMessage** command returns a unique “message ID” from the 4-Sight Fax Server. The same “message ID” returned within the **FSFX\_SendMessage** command can later be used for retrieving the fax status via the **FSFX\_GetItemStatus** command.



**IMPORTANT:** Every call to **FSFX\_StartMessage** must be balanced with a final call to either **FSFX\_SendMessage** or **FSFX\_AbandonMessage**.

## ***Message Details and Retrieval***

The **FSFX\_GetItemStatus** command allows the user to retrieve the fax status, date and time sent, etc. for any fax. The **FSFX\_GetFaxTiff** allows the FMP application to retrieve any fax file and is most useful for databases with viewing capabilities. The **FSFX\_GetTiffInfo** command provides the developer with the number of pages for the fax just retrieved. The **FSFX\_ConvertTiff** command converts one or more pages from a Fax Tiff file into any of 4 different file formats, including PDF, Pict, PNG, BMP and Tiff. When using the **FSFX\_ConvertTiff** command, files are converted and saved to the applications local hard driver.

## ***Synchronizing FMP and the 4-Sight FAX Server Address Book***

The **FSFX\_GetContact** command provides the FMP Developer a tool for retrieving 22 fields of information for any Contact within the FAX Server address. The FMP Developer accomplishes this by providing the unique ID of the Contract address book entry. This unique Contact ID is first provided by FaxPack after the Developer issues a **FSFX\_AddContact** command which adds the Contact to the 4-Sight FAX Server address book with up to 22 fields of data. Developers can modify Server address book capabilities with the **FSFX\_ModifyContact** command. Lastly, the **FSFX\_GetAddressBook** will retrieve all contact records from the Server Address book and return them to a text file, as specified by the Developer. This is useful for companies that want their 4-Sight FAX Server Address books synchronized with their FMP database.



**IMPORTANT:** When synchronizing your FMP database with the 4-Sight FAX Server address book, it will be essential to store the ContactID of the Address Book Contact within the FMP database.

## ***Managing Junk Faxes***

FaxPack contains commands for adding and removing fax numbers and companies from the Junk Fax List, maintained by the 4-Sight FAX Server. The new commands are **FSFX\_AddToBlockList** and **FSFX\_DeleteFromBlockList**.

### ***Version Command***

The FSFX\_Version command returns the string of the current FaxPack version number.

### ***FileMaker Pro Command format and return (text) strings***



**IMPORTANT:** Each FaxPack command issued from FMP will return a text string containing one or more values separated by a “|” character. In all cases, the first value returned will be a numeric error code. An error code of 0 indicates a successful command completion. All error codes can be found in the Error codes section at the end of this manual. FMP Developers must code their application to account for the “|” separator character after each parameter in the string returned after a FaxPack call is made. This is true, except after the last value, where there is no “|” returned.

# Installation

## ***What to Download***

Download either:

1. FaxPack for FMP (Macintosh).
  2. FaxPack for FMP (Windows).
- Based on the version of FMP you are operating, please pick the appropriate download file based on the target platform.
  - Customers will also need to request a special build for FaxPack 7.0 and 7.5 for compatibility for FMP 5-6.
  - **IMPORTANT:** Documentation is not unavailable for this older plug-in architecture running FMP Versions 5 and 5.5 and 6. A Demonstration database is available for the older format, which outlines the syntax while providing a list of error codes.

## ***What to Install***

FaxPack requires the installation of the 4-Sight FAX Server and, at minimum, the print driver portion of the 4-Sight FAX version 7/7.5 Client. An installer is provided for both the 4-Sight FAX v7/v7.5 print driver for Macintosh OS X and the Windows print driver.

Installation of the FaxPack plug-in is achieved by copying the plug-in file to the FMP Extensions folder.

Under Mac OS X, copy the “FaxPack.fmpplugin” file into the FMP Extensions folder.

Under Windows, copy the “FaxPack.fmx” file into the FMP Extensions folder.

After the FaxPack plug-in is installed, a new set of commands will appear in the standard FMP script editor window. Review the FileMakerPro documentation for special instructions on how to install it for use by multiple users via FMP Server.

## ***Contents of the Installation***

The FaxPack folder and its contents are contained within two separate compacted files and are available for download from the 4-Sight FAX website. There are separate downloads for the Mac and Windows installers.

The FaxPack Demo v7.5 Folder contains:

- FaxPack demo database files.
- FaxPack Order form.

- FaxPack plug-in files for the appropriate FMP Extensions folder.
- FaxPack Manual.
- Installer for the 4-Sight FAX print driver (for installation on client machines and machines where FaxPack applications operate).
- The FaxPack Demo folder contains freely distributable source code.

FaxPack developers should ensure the most current 4-Sight FAX Print Driver is installed first before using FaxPack.

# 4-Sight FAX Server and Configuration

## Server Setup

The 4-Sight FAX Server New User / Edit User dialog must be configured for each user who intends to fax and email using FaxPack (as well as from the 4-Sight FAX Client).

First, notice the Username and Password fields. These are used by the FSFX\_Login command. Note the “Full Queue Access” checkbox, which enables users to download their faxes or all faxes from the queue within the FSFX\_GetQueueListing command.

Next, note the Block List options, which are utilized with the FSFX\_AddToBlockList and FSFX\_DeleteFromBlockList commands. The broadcast fax checkbox allows Users to fax or email to more than 25 recipients per transmission. Failure to check this would prevent a User from faxing to more than 25 recipients at a time.

The Server AddressBook Privileges provide access and use of the 5 new AddressBook commands available in this area. For Users who intend to send emails as well as faxes, the Email suite options must also be established. Normally, this dialog is accessed and used by the 4-Sight FAX Administrator, but it also helps when the FMP Developer can specifically ask for what their Users need.

**New User**

Name:  Group Membership:

Password:

**Login and Access:**

- Administrator access to server
- Full queue access
- Allow automatic login
- Allow username alias
- Enforce group name as public
- Allow add to Block List
- Allow delete from Block List

**Email Suite:**

- Enable email suite
- Enable email forwarding
- Incoming email address:
- Outgoing email address:

**Dialing and Routing:**

- Enable In-Bound Routing
- User fax number:
- Specify Outgoing Fax Line:
- Allow Client to specify

**Faxing Privileges:**

- Priority fax
- Broadcast fax
- Private fax

**Server Address Book Privileges:**

- Add Address Book Contact
- Modify Address Book Contact
- Delete Address Book Contact

**Printing:**

- Use General Settings
- No Printing
- Direct Printing
- 

**Phone Card:**

- 
- Before fax number
- After fax number
- Allow Client to specify

# Command Descriptions

## Message Control

### ***FSFX\_Register***

**Syntax:** *FSFX\_Register* (DeveloperName:S; MacRegNumber:S; WinRegNumber:S):  
**Result:** S

#### **Purpose:**

The *FSFX\_Register* command provides the FMP Developer a tool to register the FaxPack plug-in for unrestricted usage. This command must be called with at least two string parameters; the licensed Developer name and the Registration Number for Macintosh and/or Windows. Each string parameter is separated by a semicolon and can be enclosed within quotes or passed as a string field or variable. The *FSFX\_Register* command should be called prior to issuing any FaxPack commands. When this command is called and passed valid parameters, it will return a 0 indicating a successful registration or 10252 for an invalid registration. An invalid registration will disable the plug-in after 45 minutes. When this happens, the FaxPack commands function normally for 45 minutes and cease to function afterwards.

FaxPack registration codes are provided by Soft Solutions, Inc. or a FaxPack reseller.

#### **Parameters:**

Name	Explanation
DeveloperName	A string containing the registered developer name.
Mac RegNumber	A String value. This value works in conjunction with the Developer Name parameter passed in parameter 1. For a Windows only setup, Developers can code this as a null string.
Win RegNumber	A String value that works in conjunction with the Developer Name passed in parameter 1. For Mac only setups, Developers can code this as a null string.

**Return Value:**

Name	Explanation
ResultCode	A string value of 0 for a successful registration or 10252 for an invalid registration.

**Example:**

*Set Field[Tablename::FXResult;FSFX\_Register("Name";"MacCode";"WinCode") Codes issued by SSI*

**FSFX\_Version**

*Syntax: FSFX\_Version("Version format"): Result:S*

**Purpose:**

The FSFX\_Version command, new to version 7, returns the string of the current FaxPack version number.

**Parameters:**

Name	Explanation
Version format	A string value with 3 options. Pass "" or "short" to retrieve the version, "long" for the plug-in name plus version or "platform" to return the platform "Mac OS X" or "Windows".

**No ParametersReturn Value:**

Name	Explanation
ResultCode	A string value with either the short or long version of the plug-in or the current plug-in operating platform.

**Example:**

*Set Field[Tablename::FXResult;FSFX\_Version ("long")]*



## FSFX\_StartMessage

**Syntax:** *FSFX\_StartMessage (From:S; Subject:S; CoverPage:L; Priority:S; SenddateTime:D); ResultCode:S*



### Purpose:

The FSFX\_StartMessage command begins the process of building a new fax message. It allocates memory for storing the information to be sent to the Fax Server for the message, and allows you to define the information for the fax cover page.

Always begin the process of creating a fax message with a call to FSFX\_StartMessage, and then use other FaxPack commands to define the content of the message. The message is then either sent to the server with a call to the FSFX\_SendMessage command or cancelled with a call to FSFX\_AbandonMessage. Please note; the “From” parameter must contain a valid User name stored on the 4-Sight FAX Server, otherwise the Fax message will be rejected.

After you call FSFX\_StartMessage, a corresponding FSFX\_SendMessage or FSFX\_AbandonMessage command must be issued prior to any additional FSFX\_StartMessage commands being issued. Either of these commands will discard any outstanding message information. FMP developers should issue the FSFX\_AbandonMessage whenever an uncorrectable error occurs.

### Parameters:

Name	Explanation
From	<p>A string expression that will appear in the “From” field on the fax header page.</p> <p> <b>IMPORTANT:</b> In version 7.0 of 4-Sight FAX, this parameter requires a valid User name as defined in the 4-Sight FAX Server list of User names.</p>
Subject	<p>A string expression containing a brief description of the fax content that will appear in the “Subject” field on the fax header page</p>
CoverPage	<p>A numeric expression that specifies the fax cover page number to be used for this message. The 4-Sight FAX server provides up to 14 unique cover pages. A value of 1 will select the first header page, 2 will select the second, and so on. The value 15 (or 0) indicates that no header page is required.</p> <p> <b>IMPORTANT:</b> If the FSFX_AddComment command is used, yet no cover page is specified here (a 0), the default cover page will be used</p>

Name	Explanation
	when this option is established as the default within the 4-Sight FAX Server preferences. Developers should use <i>the default cover page when none selected</i> .
Priority	1 = Normal, 2 = Bulk, 3 = ASAP, 4 = Important, 5 = Urgent.  This is an optional parameter.
SendDateTime	Formatted in the format YYYYMMDDhhmmss. This is an optional parameter.

**Return Value:**

Name	Explanation
ResultCode	If the memory allocation for the new message is successful, 0 is returned. If an error occurs, a non-zero error code value is returned.

**Example:**

***SetField[Tablename::FXResult;FSFX\_StartMessageFrom;Subject;CoverPage;Priority;SendDateTime]***

## Server Setup:



The 4-Sight FAX option checked below will force a cover page to print when none is specified. If the user does not choose a cover page within *FSFX\_StartMessage*, yet issues the *FSFX\_AddComment* with comments, a cover page will be used. The cover page chosen is determined by the settings on the dialog below. If the checkbox in the Cover Page Configuration is checked, then the Cover Page specified in Profile1 will be used. If the checkbox within the Cover Page Configuration is NOT checked, then the Cover Page built into 4-Sight FAX Server's internal resources will be used.

Cover Page Configuration

Use Profile1 when 'None' is specified

Resolution:  Standard  Fine

Profile1: Standard Full Page

Profile2: Standard Full Page

Profile3: Standard Full Page

Profile4: Standard Full Page

Profile5: Standard Full Page

Profile6: Standard Full Page

Profile7: Standard Full Page

Profile8: Standard Full Page

Profile9: Standard Full Page

Profile10: Standard Full Page

Profile11: Standard Full Page

Profile12: Standard Full Page

Profile13: Standard Full Page

Profile14: Standard Full Page

Cancel OK

## ***FSFX\_AddRecipient***

**Syntax:** *FSFX\_AddRecipient* (Name:S; Company:S; Fax Number/Email:S; DestKind:S; Country Code:S; Area Code:S; Salutation:S;First Name:S;Last Name:S;Title:S;Category:S Alternate Phone:S;Phone Number:S;emailaddress:S;Addressline1:S Addressline2:S; City:S;StateorProvince:S; Country:S; postalCode:S;Custom1:S;Custom2:S;Custom3:S): ResultCode:S

### **Purpose:**

The *FSFX\_AddRecipient* command is used to add a recipient to a message. A message must have at least one destination address, but there is no limit to the number of additional destination addresses a message may have. This command provides access to all of the fields available within the 4-Sight FAX address book, except with this plug-in command, all of the field information will come directly from the FMP database.



**IMPORTANT:** You must call the FSFX\_AddRecipient command at least once, after calling FSFX\_StartMessage and before calling FSFX\_SendMessage.

**Parameters:**

Name	Explanation
Name	A string expression providing the full name of the recipient of this transmission. This information is not used in the actual computer addressing.
Company	A string expression providing the Company (or postal address) of the recipient, used on the cover page of a fax.
Fax Number or Email Address	A string expression providing the Fax Number or Email Address depending upon the value of DestKind. This is the field used by Fax Server to transmit the message.
DestKind	A numeric value specifying 1 of three alternatives: 1 = Fax, 2 = Fax with Smart Dial and 3 = Email.
CountryCode	A string expression used if "DestKind" is 2 for SMART Dialing. The value is the dialing string required to access that country by telephone.
AreaCode	A string expression used if "DestKind" is 2 for SMART Dialing. The value is the dialing string required for the recipient's area code.
Salutation	A string expression for Contact's salutation.
First Name	A string expression for Contact's first name.
Last Name	A string expression for Contact's last name.
Title	A string expression for Contact's title.

Name	Explanation
Category	A string expression for Contact's category. Examples are employee, vendor, contractor, etc..
Alternate	A string expression for the Contact's alternate phone number.
Voice	A string expression for Contact's phone number.
Email	A string expression for Contact's email address.
Address1	A string expression for Contact's Address 1.
Address2	A string expression for Contact's Address 2.
City	A string expression for Contact's City.
State/Province	A string expression for State or province.
Country	A string expression for Contact's country.
Postal Code	A string expression for Contact's postal code.
Custom 1	A string expression for custom 1 field.
Custom 2	A string expression for custom 2 field.
Custom 3	A string expression for custom 3 field.

**Return Value:**

Name	Explanation
ResultCode	If the operation is successful, a value of 0 is returned. If an error occurs, a non-zero error code value is returned. If the Fax # or Email Address is empty, an Error code of 10217 is returned.

**Example:**

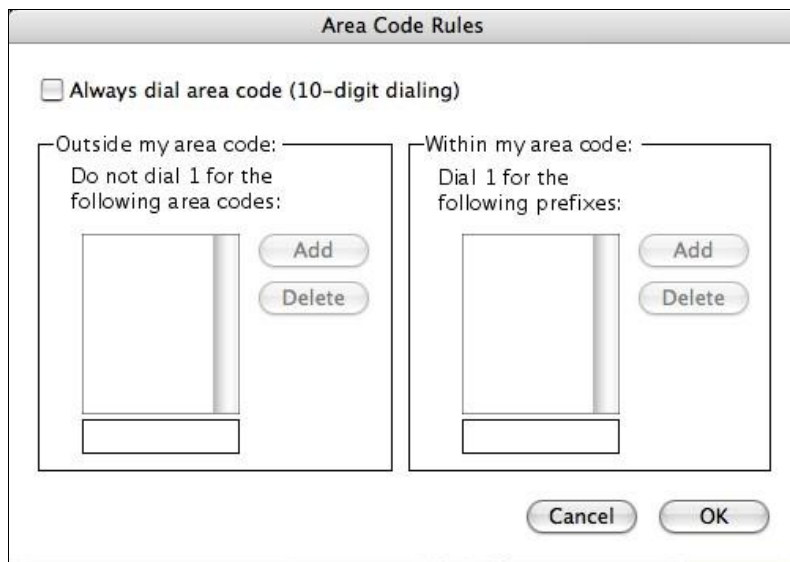
**Set Field[Tablename::FXResult;FSFX\_AddRecipient (“John Adams”,“Adams Company”,“770-454-9800”;1; SendDate;SendTime;“1”,“770”,“Mr.”;“John”,“Adams”; “President”,“Customer”,“770.454.9400”, “ ”,“770.454.9400”,“sales@adamsco.com”,“123 Main Street”,“Suite 200”,“Atlanta”,“GA”,“USA”,“30345”,“blue”,“ferrari” ;“”)]**

**Server Setup:**

*The two FAX Server Smart dial dialogs must be configured in order for SMART dialing to be relevant to FaxPack Users.*



*The Smart Dial feature must be configured specifically for your calling area. Smart Dial capabilities exist for all Users.*



## **FSFX\_AddComment**

*Syntax: FSFX\_AddComment (Comment:T): ResultCode:S*

### **Purpose:**

The FSFX\_AddComment command can be used to specify a text comment for a message's cover page. You should call this command only after calling FSFX\_StartMessage and before calling FSFX\_SendMessage. You may only specify one cover-page comment per message.



**IMPORTANT:** Issuing the FSFX\_AddComment command will force a cover page to be printed even when a cover page number is not explicitly referenced in the "*Header Page*" parameter of the FSFX\_StartMessage command. 4-Sight FAX stores and utilizes a default cover page stored in a resource on the 4-Sight FAX Server.

### **Parameters:**

Name	Explanation
Comment	A text expression providing the comment text to be displayed on the header page of a fax or in the body of an email.

**Return Value:**

Name	Explanation
ResultCode	If the operation is successful, a value of 0 is returned. If an error occurs, a non-zero error code value is returned

**Example:**

*Set Field[Tablename::FXResult;FSFX\_AddComment (Comment)]*

**FSFX\_SendMessage**

**Syntax:** *FSFX\_SendMessage*

**Purpose:**

The FSFX\_SendMessage command is used to finalize the current message and send it to the 4-Sight FAX Server. The accumulated information, addresses and enclosures specified by the previous calls to the other FaxPack commands are written to disk and sent to the currently specified server. A Message ID is assigned to a specific outgoing fax by the 4-Sight FAX v7 FAX server. The Message ID is returned by FSFX\_SendMessage and it can be later referenced using the FSFX\_GetItemStatus call to obtain the current status of that fax.

**Parameters: None**

**Return Value:**

Name	Explanation
ResultCode	If the operation is successful, a value of 0 is returned. If an error occurs, a non-zero error code value is returned.
Message ID	The newly created unique Message ID of the message just sent.

**Example:**

*Set Field[Tablename::FXResultFSFX\_SendMessage]*



## ***FSFX\_AbandonMessage***

**Syntax:** *FSFX\_AbandonMessage*

### **Purpose:**

This command disposes of all memory allocated when creating a message. It is typically called if an error condition was returned by one of the other functions, or if the application has to abandon the message for any reason. No Parameters exist for this command and no Result codes are returned.

### **Parameters:**

Name	Explanation
N/A	No Parameters exist for this command

### **Return Value:**

Name	Explanation
ResultCode	This is not a function call, therefore no error code values are returned.

### **Example:**

Set Field[Tablename::FXResultFSFX\_AbandonMessage]

No parameters are required.

## **FSFX\_GetItemStatus**

**Syntax:** *FSFX\_GetItemStatus*(UniqueMessage ID:S; QueueTypeOrIndex:S):  
ResultCode:S

### **Purpose:**

The FSFX\_GetItemStatus command allows users to determine the status, state and other related information for a particular fax or email message. This command is often used in conjunction with (and subsequent to) the FSFX\_GetQueueListing command which allows developers to obtain the Unique ID for any fax.



**IMPORTANT:** The QueueTypeOrIndex (2<sup>nd</sup>) parameter should be evaluated first to determine the nature of the value within the UniqueMessage ID parameter.

### **Parameters:**

Name	Explanation
UniqueMessage ID	When the QueueTypeOrIndex parameter value is greater than 0, this parameter contains a string expression that provides the unique Message ID of the completed outgoing fax message file, as returned by the Message ID parameter of the FSFX_SendMessage call. When the QueueTypeOrIndex parameter value is -1, this value reflects the unique fax ID assigned to the outgoing fax item by the 4-Sight FAX server. When the Queue Type or Index value is -2, it reflects the unique fax ID assigned to the incoming fax item by the 4-Sight Fax server.

Name	Explanation
QueueTypeOrIndex	An integer expression identifying either: A) which queue the fax comes from, or B) the fax index for a fax broadcast. Specify -1 for the outgoing queue, -2 for the incoming queue or the index number for the specific recipient for which you wish to obtain status information. Recipients are identified by the sequential order in which they are added to the message; for example, to obtain the status of the transmission to the 3 <sup>rd</sup> recipient of the specified message, pass a 3 in this parameter. This parameter is typically used in a facsimile or email "Broadcast" where a static message is sent to one or more recipients. Specify 1 as default for individual fax messages.

### Return Value

Name	Explanation
Result Code	If the operation is successful, a value of 0 is returned. If an error occurs, a non-zero error code value is returned. Possible non-zero responses include "-1": Demo Expired, "-43": File Not Found, and "-128": User Cancelled Operation.
From	A string variable; when the call is completed, this variable will be assigned the value of the From field on the fax cover page header of the specified transmission.
To	A string variable; when the call is completed, this variable will be assigned the value of the recipient name for the specified transmission.

Name	Explanation
Subject	A string variable; when the call is completed, this variable will be assigned the value of the Subject field on the fax cover page of the specified transmission.
Fax Number	The Fax Number of the recipient (outgoing) or sender (Incoming).
Page Count	The number of pages within the message.
Sent	0 = false, 1 = true
Printed	0 = false, 1 = true
Deleted	0 = false, 1 = true
Rejected	0 = false, 1 = true
Reject Reason	A String value indicating the reason the message was rejected
Attachment Count	A numeric value indicating the number of attachments for this message.

### Example

*Set Field[Tablename::FXResult;FSFX\_GetItemStatus (ID;QueueTypeOrIndex)]*

### **FSFX\_AddEnclosure**

**Syntax:** *FSFX\_AddEnclosure(filePath:S):ResultCode:S*

#### **Purpose:**

The FSFX\_AddEnclosure command can be used to add PDF or PNG files to a message. If it is used it must be called sometime after FSFX\_StartMessage and before FSFX\_SendMessage. Note that the file name must end with a ".pdf" or ".png" extension.

#### **Parameters:**

Name	Explanation
FilePath	A string value specifying the file's full path name.

### Return Value

Name	Explanation
Result Code	An integer value. If the operation is successful, a value of 0 is returned. If an error occurs, a non-zero error code value is returned.

# Printer Control

## ***FSFX\_SwitchPrinter***

**Syntax:** *FSFX\_SwitchPrinter*(Mode:S): ResultCode:S

### **Purpose:**

The *FSFX\_SwitchPrinter* command toggles or sets the printer device to be used for subsequent print jobs between the default physical printer and the 4-Sight FAX printer driver. The 4-Sight FAX printer driver's name is "4-Sight FAX" by default, but can be reassigned using the *FSFX\_SetPrinter* command.

As an example, if the user currently has a Hewlett Packard (HP) printer device file as the default printer, this command can be used to explicitly set 4-Sight FAX as the current printer, or subsequently revert to the HP as the current printer, or to toggle between the two.

### **Parameters:**

Name	Explanation
Mode	An Numeric expression that specifies the desired operation  Return Value: 0 = toggle printers, 1 = select the user's normal printer, 2 = select the 4-Sight FAX printer driver.

### **Return Value:**

Name	Explanation
ResultCode	If the operation is successful, a value of 0 is returned. If an error occurs, a non-zero error code value is returned.

### **Example:**

*Set Field[Tablename::FXResult;FSFX\_SwitchPrinter (2)]*

## **FSFX\_PreparePrint**

**Syntax:** *FSFX\_PreparePrint(Resolution:L;GrayScale:S): ResultCode:S*

### **Purpose:**

The FSFX\_PreparePrint command sets the resolution and allows the generation of fax image files automated for controlled transmission. In addition, the FSFX\_PreparePrint command is **required** for every FMP print job. When the command is issued, a flag is set in the control structure and the current date and time is stored. This information is used by the 4-Sight FAX Printer Driver on the next fax print. The flag suppresses the user interface and the image is printed directly to disk, adding it automatically as an enclosure to the current message.

### **Parameters:**

Name	Explanation
Resolution	A numeric expression that specifies the resolution required for the fax image file:  Return Value:  1 = standard resolution,  2 = fine resolution.
Grayscale	0 = No grayscale, 1 = grayscale  Use grayscale for better quality in images. This, however, makes the image take a longer time to image.

### **Return Value:**

Name	Explanation
ResultCode	If the operation is successful, a value of 0 is returned. If an error occurs, a non-zero error code value is returned.

### **Example:**

**Set Field[Tablename::FXResult;FSFX\_PreparePrint (2;1)]**

Note: Specify fine resolution.

# Server Control

## FSFX\_ServerLookup

**Syntax:** *FSFX\_ServerLookup*(;Timeout:S;MaxToFind:S):ResultCode:S

### Purpose:

The FSFX\_ServerLookup command allows you to retrieve the list of 4-Sight FAX-Servers found in your Local Area Network (LAN). This step is required when the application is first installed or the 4-Sight FAX server configuration is changed. After the user selects a server, future messages are sent to the selected server when FSFX\_SendMessage is called.

The command will return a description of the chosen server name, the associated IP address and the Server port number for each 4-Sight FAX server found. To select a server, the values should be saved in the FMP database so they can be passed as necessary parameters with the FSFX\_ServerLogin command for subsequent sessions. Within each TCP/IP network, it may take several seconds search time to locate and return all of the local area network fax servers. The default time for fax server lookup and display is 5 seconds. If more time is needed because of either a larger or slower network, the FMP Developer can increase the "TMEOUT" time to a larger number.

CAUTION: FMP Developers are not encouraged to use large numbers in the TimeOut parameter, because the command may wait until this number of seconds has transpired before returning values. The MaxToFind parameter, usually a value of 1, allows you to specify how many 4-Sight Servers to search for. The search will stop either when the MaxToFind or Timeout has been reached (whichever happens first).

### Parameters:

Name	Explanation
Timeout	A numeric variable that specifies the maximum number of seconds to search before presenting the list of available fax servers (on the current local area network (LAN)). If 0 (seconds) is entered, 5 is used.
MaxToFind	An numeric variable that specifies the maximum number of FAX servers to find before terminating the search.

### Return Value:

Name	Explanation
------	-------------



ResultCode	If the operation is successful, a value of 0 is returned. If an error occurs, a non-zero error code value is returned.
ServerName	A string variable that contains the name of the 4-Sight FAX server.
Server IP Address	A string variable that is assigned the TCP/IP Address of the 4-Sight FAX Server.
Server Port	A numeric variable containing the assigned Port Number of the 4-Sight FAX Server.

**Example:**

*Set Field[Tablename::FXResult;FSFX\_ServerLookup(Timeout;MaxToFind)]*

***FSFX\_ServerLogin***

**Syntax:** *FSFX\_ServerLogin(Server IP Address:S; Server Port:L; Username:S;Password:S;TrialLogin:S):ResultCode:S*

**Purpose:**

The FSFX\_ServerLogin command is used to request FAX server access or to change the current FAX server for pending and future messages in the current application session. The server description is obtained by calling the FSFX\_ServerLookup commands.

If the specified server is valid and available, and the Username and password are also valid, then the connection is established and messages will be sent to the specified server when the FSFX\_SendMessage command is called.

If the specified server is not available and the values passed are incorrect, the developer should reissue the FSFX\_ServerLookup command to obtain a list of valid servers. After a valid server is logged into, messages will be sent to the selected server when the FSFX\_SendMessage command is called. Messages cannot be sent to a server until the server login process has been completed.

**Parameters:**

Name	Explanation
Server IP Address	A string variable that will be assigned the TCP/IP Address of the 4- Sight FAX Server.

Server Port	A numeric variable that will be assigned the Port Number of the 4-Sight FAX Server.
Username	A valid Username, established by the 4-Sight FAX Administrator on the 4-Sight FAX Server.
Password	The password assigned to the Username specified in the previous parameter.
TrialLogin	A numeric value where 0 = no and 1 = yes.

**Return Value:**

Name	Explanation
ResultCode	<p>If the operation is successful, a value of 0 is returned. If an error occurs, a non-zero error code value is returned.</p> <p>Successfully completed commands will return an error code of 0. If the username or associated password is not valid, however, the command will return the value 10052.</p>

**Example:**

*Set Field[Tablename::FXResult;FSFX\_ServerLogin (ServerIPAddress;ServerPort;Username;Password;0)]*

**FSFX\_GetCoverPages**

*Syntax: FSFX\_GetCoverPages: ResultCode:S*

**Purpose:**

*The FSFX\_GetCoverPages command allows you to retrieve a list of the cover page names defined in the current server. A maximum of 14 cover pages are supported.*

**Parameters: None**

**Return Value:**

Name	Explanation
ResultCode	<p>If the operation is successful, a value of 0 is returned. If an error occurs, a non-zero error code value is returned.</p>
Name1	<p>A string containing the name of the 1<sup>st</sup> cover page as assigned on the 4-Sight FAX server.</p>
Name2 – Name13	<p>Strings containing the names of the (2<sup>nd</sup> to 13<sup>th</sup>) cover pages as assigned on the 4-Sight FAX server. Rather than list 11</p>

	separate row entries, we have simply referenced these cover pages here in one entry. Each cover page name will be separated by the “ ” delimiter character.
Name14	A string containing the name of the 1 <sup>st</sup> cover page as assigned on the 4-Sight FAX server.

**Example:**

*Set Field[Tablename::FXResult; FSFX\_GetCoverPages ()]]*

## Queue Access

### *FSFX\_GetQueueListing*

**Syntax:** *FSFX\_GetQueueListing(Kind:S;DestPath): ResultCode:S*

**Purpose:**

The FSFX\_GetQueueListing command downloads a queue listing from the FAX Server into a local text file saved on the client machine issuing this call. The queue file provides an equivalent row along with all its fields for each fax record within the queue specified in the “Kind” parameter. All of the values within a specific row comprise all of the data available for each fax. The parameter descriptions are as follows.

**Parameters:**

Name	Explanation
Kind	A numeric value. 1 = all faxes out, 2 = all faxes in, 3 = my faxes out, 4 = my faxes in
DestPath	Full destination path name to the text file. This file contains the queue information as requested in parameter 1 (Kind).

**Text file format for incoming queue listing:**

Name	Explanation
ID	A numeric value containing the Fax message ID number.

Name	Explanation
Date	A date value containing the date of the fax.
FromNumber	A string value containing the fax number the facsimile came from.
To	A string value containing the recipient name for the facsimile.
Subject	A string value containing the subject for the facsimile.
State	A value containing the state of the facsimile. Because all values within this text file are essentially strings, this value should be converted within the FMP program to a numeric value. The State contains flags where Hex 0x01= "sent", read or printed", where 0x02= "suspended", where "0x04" = "sent", where "0x08" = "rejected" and where "0x10" = "maximum retries".

Name	Explanation
Status	<p>A string value containing the current status of the facsimile where the following possible values exist as of v7.0:</p> <ul style="list-style-type: none"> <li>“Page: #/#”,</li> <li>“Sending”,</li> <li>“&lt;Suspended&gt;”,</li> <li>“Failed”,</li> <li>“Waiting”,</li> <li>“Deleting”,</li> <li>“Deleted”,</li> <li>“Sent”,</li> <li>“Failed”,</li> <li>“Archiving”,</li> <li>“Max Retries”,</li> <li>“Stopping... ”,</li> <li>“Printed”,</li> <li>“Rejected”,</li> <li>“Imaging Page”,</li> <li>“Prep: # of #”,</li> <li>“Converting”,</li> <li>“Received”,</li> <li>“Unconverted”,</li> <li>“Imaged”,</li> <li>“Read”,</li> <li>“Print”,</li> <li>“Printing”,</li> <li>“Preparing # of #”,</li> <li>“Connecting... ”,</li> <li>“Connected”,</li> <li>“Sending Page: #”,</li> <li>“Receiving Page #”.</li> </ul> <p>This list is subject to change, so it is not advisable to build programmer logic around the values.</p>
Number of Pages	<p>A value containing the number of pages for the facsimile. This string should be converted within the FMP program to a numeric value.</p>
Size	<p>A value containing the physical size, in bytes, of the facsimile for the facsimile. Within the text file, this is stored as a string and should be converted within the FMP program to a numeric value.</p>

Name	Explanation
From	A string value containing the person who sent the facsimile.
FromNumber	A string value containing the fax number of the person who sent the facsimile.

**Text file format for outgoing queue listing:**

Name	Explanation
Message ID	A numeric value containing the Fax message ID number.
Date	A Date value containing the date of the fax.
To	A string value containing the recipient name for the facsimile.
Subject	A string value containing the subject for the facsimile.
State	A value containing the state of the facsimile. Because all values within this text file are essentially string, this value should be converted within the FMP program to a numeric value. The State contains flags where Hex 0x01= "sent", read or printed", where 0x02= "suspended", where "0x04" = "sent", where "0x08" = "rejected" and where "0x10" = "maximum retries".
Status	A string value containing the current status of the facsimile where the following possible values exist as of v7.0: "Preparing page: #/#", "Page: #/#", "Sending", "<Suspended>", "Failed", "Waiting", "Deleting", "Deleted", "Sent", "Failed", "Printing", "Archiving", "Max Retries", "Stopping...", "Printed", "Rejected", "Imaging Page", "Prep: # of #", "Converting", "Received", "Unconverted", "Imaged", "Read",

Name	Explanation
	"Print", "Printing", "Preparing # of #", "Sending", "Connecting...", "Connected", "Sending Page: #", "Receiving Page #". This list is subject to change, so it is not advisable to build programmer logic around the values.
Priority	A string value indicating the priority for this fax. Values range from 1 (lowest) to 5 (highest).
Reason	A string value containing the reason te fax was rejected.
CommType	An numeric value where 1 = fax and 2 = email. Within the text file, this is stored as a string and should subsequently be converted in the FMP program to a numeric value.

**Return Value:**

Name	Explanation
ResultCode	A numeric value. If the operation is successful, a value of 0 is returned. If an error occurs, a non-zero error code value is returned.
NumberofRows	A numeric value containing the number of rows from the queue written to the text file.

**Example:**

***Set Field[Tablename::FXResult;FSFX\_GetQueueListing(Kind;Destpath)]***

***FSFX\_GetRowColumn***

***Syntax: FSFX\_GetGetRowColumn(;RowNumber:L;ColumnNumber:L; Tablename::FXResult :S): ResultCode:S***

**Purpose:**



The `FSFX_GetRowColumn` command parses the strings returned in any of the other FaxPack commands and returns the value for a specific row and column.

**Parameters:**

Name	Explanation
RowNumber	A numeric value. Pass a value of 0 to receive the error code, pass a value of 1 to obtain the first Row.
ColumnNumber	A numeric value. Pass a value of 0 to receive the error code, pass a value of 1 to obtain the first Row.
StringtoInspect	The string value to inspect. Per this manual and the examples provided in the FMP demo, the value is stored in a field name called: <b>Tablename::FXResult</b>

**Return Value:**

Name	Explanation
Value	A string containing the value within the StringtoInspect (3 <sup>rd</sup> ) parameter based on the row and column specified in the 1 <sup>st</sup> (ColumnNumber) and 2 <sup>nd</sup> (ColumnNumber) parameters.

**Example:**

***FSFX\_GetGetRowColumn**(RowNumber;ColumnNumber;**Tablename::FXResult**)*

**FSFX\_GetFaxTiff**

**Syntax:** ***FSFX\_GetFaxTiff**(WhichQueue:I; ItemID:L;Part:I;Attachment Number;I;Tiff File Path;S):ResultCode:I*

**Purpose:**

The `FSFX_GetFaxTiff` allows the FMP application to retrieve a fax file from the 4-Sight FAX server. This command is useful for Tiff File retrieval for databases providing facsimile viewing capabilities or local archival. Developers can either retrieve: 1) a one page preview (Part = 1) (for the first page) 2) the cover page (Part = 2) or 3) the attachments for outgoing faxes (Part = 3).

**Parameters:**

Name	Explanation
Queue	A numeric value. 1 = outgoing, 2 = incoming
ItemID	A numeric value. The unique ID number for the facsimile.
Part	A numeric value. 1 = One Page Preview (valid for incoming and outgoing), 2 = cover page (valid for outgoing only), 3 = attachment (valid for incoming and outgoing).
Attachment #	A numeric value used if "Part" is equal to "3".
Tiff File Path	A string expression providing the full path name of the Tiff file location on the client machine.

**Return Value:**

Name	Explanation
ResultCode	An integer value. If the operation is successful, a value of 0 is returned. If an error occurs, a non-zero error code value is returned.

**Example:**

**Set Field[Tablename::FXResult;FSFX\_GetFaxTiff(QueueType;ItemID;Part; AttachmentNumber;TiffFilePath)]**

**FSFX\_ArchiveItem**

**Syntax: FSFX\_ArchiveItem(WhichQueue:I; ItemID:L;Archive Kind):ResultCode:I**

**Purpose:**

The FSFX\_ArchiveItem command sends a request to the 4-Sight FAX server to archive the given queue item. The queue item must be marked "completed" for it to be archived. For incoming faxes "completed" means the fax has been read and if printing is turned on it must have been printed. For outgoing faxes "completed" means the fax has been sent and if

printing is turned on it must have been printed. If a queue item is part of a broadcast fax then it will not be archived until all related broadcast recipients have been sent to.

**Parameters:**

Name	Explanation
Queue	A numeric value. 1 = outgoing, 2 = incoming
ItemID	A numeric value. The unique ID number for the facsimile.
ArchiveKind	A numeric value. 1 = Original format, 2 = PDF File, 3 = Both. (PDF is only available for incoming faxes).

**Return Value:**

Name	Explanation
ResultCode	An integer value. If the operation is successful, a value of 0 is returned. If an error occurs, a non-zero error code value is returned.

**Example:**

***Set Field[Tablename::FXResult; FSFX\_ArchiveItem(QueueType;ItemID;ArchiveKind)]***

# Image Control

## ***FSFX\_GetTiffInfo***

**Syntax:** *FSFX\_GetTiffInfo(TiffFilePath:S):ResultCode:S*

### **Purpose**

The *FSFX\_GetTiffInfo* command returns the number of pages in the Tiff file specified. Retrieve the Tiff file from the FAX Server first using the *FSFX\_GetFaxTiff* command because the *FSFX\_GetTiffInfo* command operates on files from the local hard drive.

### **Parameters:**

Name	Explanation
Tiff File Path	A string value specifying the Tiff source file's full path name.

### **Return Value:**

Name	Explanation
ResultCode	An integer value. If the operation is successful, a value of 0 is returned. If an error occurs, a non-zero error code value is returned.
Number of Pages	A value indicating the number of pages in the file specified in Tiff File Path.

### **Example:**

*Set Field[Tablename::FXResult:FSFX\_GetTiffInfo(TiffFilePath)]*

## ***FSFX\_ConvertTiff***

**Syntax:** *FSFX\_ConvertTiff(ConvertType:S;TiffFilePath:S;DestFilePath:S;StartPageNum:S;EndPageNum:S): ResultCode:S*

### **Purpose:**

The *FSFX\_ConvertTiff* command converts the Fax Tiff file into any of 5 different file formats including PDF, Pict, PNG, BMP and Tiff. Developers can optionally specify the page range for

each file. Additionally, the developer must specify the Tiff source file full path name as well as the destination file path.



**IMPORTANT:** Prior to calling the FSFX\_ConvertTiff command, the developer should call the FSFX\_GetFaxTiff command to first retrieve the Tiff file to be converted.

**Parameters:**

Name	Explanation
Convert Type	An integer value specifying the file type, where 1=PDF, 2=Pict, 3 = PNG, 4 = BMP and 5 = Tiff.
Tiff File Path	A string value containing the full path filename of the source Fax Tiff file (input).
Dest File Path	A string value containing the full path filename of the saved file name (output).
Start Page Number	An integer indicating the starting page number to extract and save (from the file specified in Tiff File Path).
End Page Number	An integer indicating the ending page number to extract and save (from the file specified in Tiff File Path).

**Return Value:**

Name	Explanation
ResultCode	An integer value. If the operation is successful, a value of 0 is returned. If an error occurs, a non-zero error code value is returned

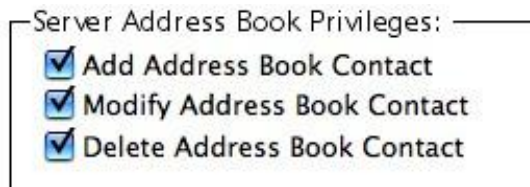
**Example:**

*Set Field[Tablename::FXResult;FSFX\_ConvertTiff (3;MyFaxFile;NewFileName;StartPageNum;EndPageNum)]*

# Address Book

Server Setup:

Please contact your 4-Sight FAX Administrator to ensure those FaxPack Users who intend to work with the 4-Sight FAX Address Book are set up to do so. The following screen shot from the User setup dialog shows the boxes to be checked to enable all Address Book privileges from a FaxPack application.



## ***FSFX\_GetContact***

**Syntax:** *FSFX\_GetContact(ContactID:L):ResultCode:S*

### **Purpose:**

The *FSFX\_GetContact* command returns the contact record information from the 4-Sight FAX Server address book into a pipe-based ("|") delimited text string based on the ContactID value passed.

### **Parameters:**

Name	Explanation
ContactID	A long integer value specifying the ID of the Contact desired.

**Return Value:**

Name	Explanation
ResultCode	An integer value. If the operation is successful, a value of 0 is returned. If a ContactID of 0 is passed, the error code returned is 10023. If the ContactID is not 0 and is not found, an error code of 10090 is returned. When someone else is currently editing the contact record, a 10091 error code is returned. When the user does not have this privilege (as defined on the FAX Server), a 10057 error code is returned. If other errors occur, a non-zero error code value is returned.
Full Name	A string value containing the full name of the address book entry.
First Name	A string value containing the first name of the address book entry.
Last Name	A string value containing the last name of the address book entry.
Salutation	A string value containing the salutation of the address book entry.
Title	A string value containing the title of this contact.
Company	A string value containing the Company name for this contact.
Category	A string expression for Contact's category. Examples are employee, vendor, contractor, etc..
Smart Dialing	"0" = no, "1" = yes



Name	Explanation
Country Code	The country code for this contact.
Area Code	A string expression for the Contact's area code.
Fax Number	A string expression for Contact's fax number.
Email Address	A string expression for Contact's email address.
Phone Number	A string expression for Contact's telephone number.
Address1	A string expression for Contact's Address line 1.
Address2	A string expression for Contact's Address line 2.
City	A string expression for Contact's City.
State/Province	A string expression for State or province.
Country	A string expression for Contact's country.
Postal Code	A string expression for Contact's postal code.
Custom 1	A string expression for custom 1 field.
Custom 2	A string expression for custom 2 field.
Custom 3	A string expression for custom 3 field.

**Example:**

*Set Field[Tablename::FXResult;FSFX\_GetContact (ContactID)]*

## **FSFX\_ModifyContact**

**Syntax:** *FSFX\_ModifyContac(ContactID:S;FullName:S;firstName:S;lastName:S;salutation:S;title:S;company:S;category:S;smartDial:S;countryCode:S;areaCode:S;faxNumber:S;emailAddress:S;phoneVoice:S;addressLine1:S;addressLine2:S;city:S;stateOrProvince:S;countryName:S;postalCode:S;custom1:S;custom2:S;custom3):ResultCode:S*

### **Purpose:**

The FSFX\_ModifyContact command updates the contact address record information in the 4-Sight FAX Server address book.. The developer must provide the ContactID for the desired Contact from the 4-Sight FAX Server Address Book.

### **Parameters:**

Name	Explanation
ContactID	A long integer value specifying the ID of the Contact desired.
Full Name	A string value containing the full name of the address book entry.
First Name	A string value containing the first name of the address book entry.
Last Name	A string value containing the last name of the address book entry.
Salutation	A string value containing the salutation of the address book entry.
Title	A string value containing the title of this contact.
Company	A string value containing the Company name for this contact.
Category	A string expression for Contact's category. Examples are employee, vendor, contractor, etc..

Name	Explanation
Smart Dialing	"0" = no, "1" = yes
Country Code	The country code for this contact.
Area Code	A string expression for the Contact's area code.
Fax Number	A string expression for Contact's fax number.
Email Address	A string expression for Contact's email address.
Phone Number	A string expression for Contact's telephone number.
Address1	A string expression for Contact's Address line 1.
Address2	A string expression for Contact's Address line 2.
City	A string expression for Contact's City.
State/Province	A string expression for State or province.
Country	A string expression for Contact's country.
Postal Code	A string expression for Contact's postal code.
Custom 1	A string expression for custom 1 field.
Custom 2	A string expression for custom 2 field.
Custom 3	A string expression for custom 3 field.

**Return Value:**

Name	Explanation
ResultCode	An integer value. If the operation is successful, a value of 0 is returned. If a ContactID of 0 is passed, the error code returned is 10023. If the ContactID is not 0 and is not found, an error code of 10090 is returned. When someone else is editing the contact record, a 10091 error code is returned. When the user does not have this privilege (as defined on the FAX Server), a 10057 error code is returned. If other errors occur, a non-zero error code value is returned.

**Example:**

***Set Field[Tablename::FXResult;FSFX\_ModifyContact (contactID;fullName;firstName; lastName;salutation;title;company;category;smartDial;countryCode;areaCode;faxNumber; emailAddress;phoneVoice;addressLine1;addressLine2;city;stateOrProvince;countryName; postalCode;custom1;custom2;custom3)]***

## **FSFX\_AddContact**

### **Syntax: FSFX\_AddContact**

*(FullName:S;firstName:S;lastName:S;salutation:S;title:S;company:S;category:S;smartDial:S;countryCode:S;areaCode:S;faxNumber:S;emailAddress:S;phoneVoice:S;addressLine1:S;addressLine2:S;city:S;stateOrProvince:S;countryName:S;postalCode:S;custom1:S;custom2:S;custom3): ResultCode:S*

### **Purpose:**

The FSFX\_AddContact command adds the contact address record information to the 4-Sight FAX Server address book. The ContactID value will be created by the 4-Sight FAX Server and returned by the command.

### **Parameters:**

Name	Explanation
ContactID	A long integer value where the ID of the new Contact record is returned. Leave blank for this command.
Full Name	A string value containing the full name of the address book entry.
First Name	A string value containing the first name of the address book entry.
Last Name	A string value containing the last name of the address book entry.
Salutation	A string value containing the salutation of the address book entry.
Title	A string value containing the title of this contact.
Company	A string value containing the Company name for this contact.

Name	Explanation
Category	A string expression for Contact's category. Examples are employee, vendor, contractor, etc..
Smart Dialing	"0" = no, "1" = yes
Country Code	The country code for this contact.
Area Code	A string expression for the Contact's area code.
Fax Number	A string expression for Contact's fax number.
Email Address	A string expression for Contact's email address.
Phone Number	A string expression for Contact's telephone number.
Address1	A string expression for Contact's Address line 1.
Address2	A string expression for Contact's Address line 2.
City	A string expression for Contact's City.
State/Province	A string expression for State or province.
Country	A string expression for Contact's country.
Postal Code	A string expression for Contact's postal code.
Custom 1	A string expression for custom 1 field.

Name	Explanation
Custom 2	A string expression for custom 2 field.
Custom 3	A string expression for custom 3 field.

**Return Value:**

Name	Explanation
ResultCode	An integer value. If the operation is successful, a value of 0 is returned. When the user does not have this privilege (as defined on the FAX Server), a 10057 error code is returned. If other errors occur, a non-zero error code value is returned.
ContactID	A long integer value where the ID of the new Contact record is returned.  This value is generated by the 4-Sight Fax Server.

**Example:**

**Set Field[Tablename::FXResult; FSFX\_AddContact (FullName;firstName; lastName;salutation;title;company;category;smartDial;countryCode;areaCode;faxNumber; emailAddress;phoneVoice;addressLine1;addressLine2;city;stateOrProvince;countryName; postalCode;custom1;custom2;custom3)]**

**FSFX\_DeleteContact**

**Syntax:** *FSFX\_DeleteContact (ContactID:L):ResultCode:S*

**Purpose:**

The FSFX\_DeleteContact command deletes the contact address record from the 4-Sight FAX Server address book with the given ContactID field.

**Parameters:**

Name	Explanation
------	-------------

ContactID	A long integer value where the ID of the Contact record to be deleted.
-----------	--

**Return Value:**

Name	Explanation
ResultCode	An integer value. If the operation is successful, a value of 0 is returned. If a ContactID of 0 is passed, the error code returned is 10023. If the ContactID is not 0 and is not found, an error code of 10090 is returned. When the contact record is being edited by someone else, a 10091 error code is returned. When the user does not have this privilege (as defined on the FAX Server), a 10057 error code is returned. If other errors occur, a non-zero error code value is returned.

**Example:**

Set Field[Tablename::FXResult;FSFX\_DeleteContact (ContactID)]

## Block List

### *FSFX\_AddToBlockList*

**Syntax:** *FSFX\_AddToBlockList (Name:S;Number:S):ResultCode:S*

**Purpose:**

The FSFX\_AddToBlockList command adds the name of the fax sender and the fax number to the 4-Sight FAX Server Block List. By doing this, future incoming faxes from this fax number will be halted at the time of recognition.

**Parameters:**

Name	Explanation
Name	Name of the Company that is sending faxes that you want blocked.



Fax Number	The Fax Number you are receiving unwanted faxes from that you want blocked.
------------	---

**Return Value:**

Name	Explanation
ResultCode	An integer value. If the operation is successful, a value of 0 is returned. If an error occurs, a non-zero error code value is returned.

**Example:**

*Set Field[Tablename::FXResult;FSFX\_AddToBlockList (Name;FaxNumber)]*

## Server Setup:



The 4-Sight FAX Block List capabilities must be enabled from the 4-Sight FAX Server for each User who will be using this feature. To allow a User to add to the Fax Block list, check the “Allow add to Block List”. To allow a User to delete to the Fax Block list, check the “Allow delete from Block List”. For example, please review the following FAX Server screen:

Login and Access:

- Administrator access to server
- Full queue access
- Allow automatic login
- Allow username alias
- Enforce group name as public
- Allow add to Block List
- Allow delete from Block List

## FSFX\_DeleteFromBlockList

**Syntax:** *FSFX\_DeleteFromBlockList (Number:S):ResultCode:S*

### Purpose:

The FSFX\_DeleteFromBlockList command deletes the fax number from the 4-Sight FAX Server Block List including its associated name. By doing this, future incoming faxes from this fax number will no longer be halted by the 4-Sight FAX Server.

### Parameters:

Name	Explanation
Fax Number	The Fax Number you were previously blocking faxes from that you no longer want blocked.

**Return Value:**

Name	Explanation
ResultCode	An integer value. If the operation is successful, a value of 0 is returned. If an error occurs, a non-zero error code value is returned.

**Example:**

*Set Field[Tablename::FXResult;FSFX\_DeleteFromBlockList(FaxNumber)]*

# Command Summary

The following table is a summary of all of the FaxPack commands and their syntax.

Value	Definition
FSFX_Register	<b>FSFX_Register</b> (DeveloperName:S; Mac RegNumber:S;Win RegNumber:S;)
FSFX_Version	<b>FSFX_Version (versionFormat):</b> ResultCode:
FSFX_StartMessage	<b>FSFX_StartMessage</b> (From:S; Subject:S; CoverPage:L; priority:L;SendDateTime): ResultCode:S
FSFX_AddRecipient	<b>FSFX_AddRecipient</b> (Name:S; Company:S; Fax Number:S; IsUrgent:S; DestKind:S; SendDate:D; Send- Time:H; Country Code:S; Area Code:S; Other Fields:X): ResultCode:S
FSFX_AddComment	<b>FSFX_AddComment</b> (Comment:T; Resolution:L): ResultCode:S
FSFX_SendMessage	<b>FSFX_SendMessage</b> (Message ID:S; SingleUser:S; AllowPicker:S): ResultCode:S
FSFX_AbandonMessage	<b>FSFX_AbandonMessage</b>
FSFX_GetItemStatus	<b>FSFX_GetItemStatus</b> (UniqueMessage ID:S; QueueTypeOrIndex:S; PageCount:S; Status:S; From:S; To:S; Subject:S; Address:S; Number:S; NextSendTime:H; IsDone:S; IsPrinted:S; IsRejected:S;IsDeleted:S): ResultCode:S
FSFX_SwitchPrinter	<b>FSFX_SwitchPrinter</b> (Mode:S): ResultCode:S
FSFX_PreparePrint	<b>FSFX_PreparePrint</b> (Resolution:L): ResultCode:S
FSFX_GetCoverPage	<b>FSFX_GetCoverPages:</b> ResultCode:S
FSFX_GetQueueListing	<b>FSFX_GetQueueListing</b> (Kind:DestPath:S): ResultCode:S

FSFX_ServerLookup	<b>FSFX_ServerLookup</b> (timeoutSeconds;MaxtoFind):ResultCode:S
FSFX_GetFaxTiff	<b>FSFX_GetFaxTiff</b> (Queue:S; ItemID:L;Part:S;Attachment Number;l;Tiff File Path;S):ResultCode:S
FSFX_GetTiffInfo	<b>FSFX_GetTiffInfo</b> (TiffFilePath:S;NumberOfPages:S):ResultCode:S
FSFX_GetRowColumn	<b>FSFX_GetRowColumn</b> (Row;Column;Text)
FSFX_ConvertTiff	<b>FSFX_ConvertTiff</b> (ConvertType:S;TiffFilePath:S;DestFilePath:S;StartPageNum:S ; EndPageNum:S): ResultCode:S
FSFX_GetContact	<b>FSFX_GetContact</b> (ContactID:L;Contactfields:X):ResultCode:S
FSFX_ModifyContact	<b>FSFX_ModifyContact</b> (ContactID:L;Contactfields:X):ResultCode:S
FSFX_AddContact	<b>FSFX_AddContact</b> (ContactID:L;Contactfields:X):ResultCode:S
FSFX_DeleteContact	<b>FSFX_DeleteContact</b> (ContactID:L):ResultCode:S
FSFX_GetAddressBook	<b>FSFX_GetAddressBook</b> (Dest File Path:S;Columns:X;Encoding:S): ResultCode:S
FSFX_AddToBlockList	<b>FSFX_AddToBlockList</b> (Name:S;Number:S):ResultCode:S
FSFX_DeleteFromBlockList	<b>FSFX_DeleteFromBlockList</b> (Number:S):ResultCode:S

## Error Codes

The following table lists possible numeric values returned by the commands described earlier, along with their definitions and the mnemonic names by which they are referred. These values represent errors directly related to the Fax Server software. Unlisted OS codes are possible.

Value	Definition
0	No error; the operation was performed successfully.
-1	The FaxPack demonstration time has expired.
10003	A file could not be opened for reading.
10004	A file could not be opened for writing.
10005	A file was empty.
10006	A read error.
10007	A write error.
10008	Could not obtain a session with the Server.
10009	Message ID was not found.
10010	Fax printer was not found.
10011	A time-out happened when waiting for a Fax printer file to complete.
10052	Invalid User or Password.
10012	4-Sight Fax printer version 5.0.5 or later is required
10013	Must have at least one recipient for an outgoing fax

10014	Printer does not exist
10015	The Fax printer does not support this feature
10023	Invalid Contact ID (usually a value of 0)
10024	This feature is not supported by the Fax Server
10052	Invalid User or Password
10053	User is already logged-in.
10054	Logins are disabled at the Server.
10057	User does not have the permission to perform operation. New in v7.
10073	"From" name is different than the User name, and the "Allow user name alias" is unchecked at the server. New in version 7.
10082	Unknown archive kind
10083	Archive kind not available for this queue item
10084	Cannot archive; the incoming fax has not been read
10085	Cannot archive; the incoming fax has not been printed
10086	Cannot archive; the outgoing fax has not been sent
10087	Cannot archive; not all related recipients have been sent to
10088	Cannot archive; the outgoing fax has not been printed
10089	The queue item with the given ID does not exist
10090	the Contact with the given ID was not found. New in version 7.

10091	The contact is being edited by another user. New in version 7.
10093	The PDF archive could not be created
10108	Communication with the Server timed-out.
10155	Attachment cannot be located.
10185	Attachment or recipient list rejected by the Fax Server.
10200	The current Server has not been set.
10201	The current login information has not been set.
10202	Print preparation has not been called.
10203	Server is invalid or is not responding.
10204	A memory allocation failed.
10205	Command is unimplemented.
10206	"FSFX_StartMessage" must be called first.
10207	Message command has been called in the wrong order.
10208	A message is already being created.
10209	A valid 'From' is needed.
10210	Invalid path.
10211	Invalid array type.
10212	Navigation Services are not available.
10213	Must use Mac OS X 10.2.2+ for "FSFX_SwitchPrinter".



10214	There were no calls to "FSFX_PreparePrint".
10215	There was more than one call to "FSFX_PreparePrint".
10217	The fax number parameter to "FSFX_AddRecipient" was empty.
10218	Insufficient number of parameters passed
10219	Could not get parameter
10220	Invalid switch printer code
10221	No servers found
10222	An IP Address is needed
10223	A User name is needed
10250	Demonstration has expired
10250	Beta version has expired
10251	Invalid registration

## Frequently Asked Questions (FAQ)

### **I am not specifying a cover page. Why is one being sent?**

*On the FAX Server, there is a preference that will enforce "use of a cover page when none is specified". Make sure this option is turned OFF.*

### **Why does the print job I attempt to fax, regardless of the FSFX\_SwitchPrinter command, go to the print queue and not the fax queue?**

*Be sure to always include the FSFX\_PreparePrint command (prior to issuing the FMP Print command), as this command is necessary for proper faxing. This will allow the FSFX\_SwitchPrinter command to work properly. Also, ensure the FSFX\_StartMessage and FSFX\_SendMessage are part of every fax job.*

### **The plug-in always has to login, even on consecutive faxing attempts, and regardless of the login status of the fax client. How to I do this?**

*When logging in, be sure to set the last parameter in the FSFX\_ServerLogin command to "1". This actually runs the login. If this parameter is omitted or set to "0", then the log-in will not actually occur.*

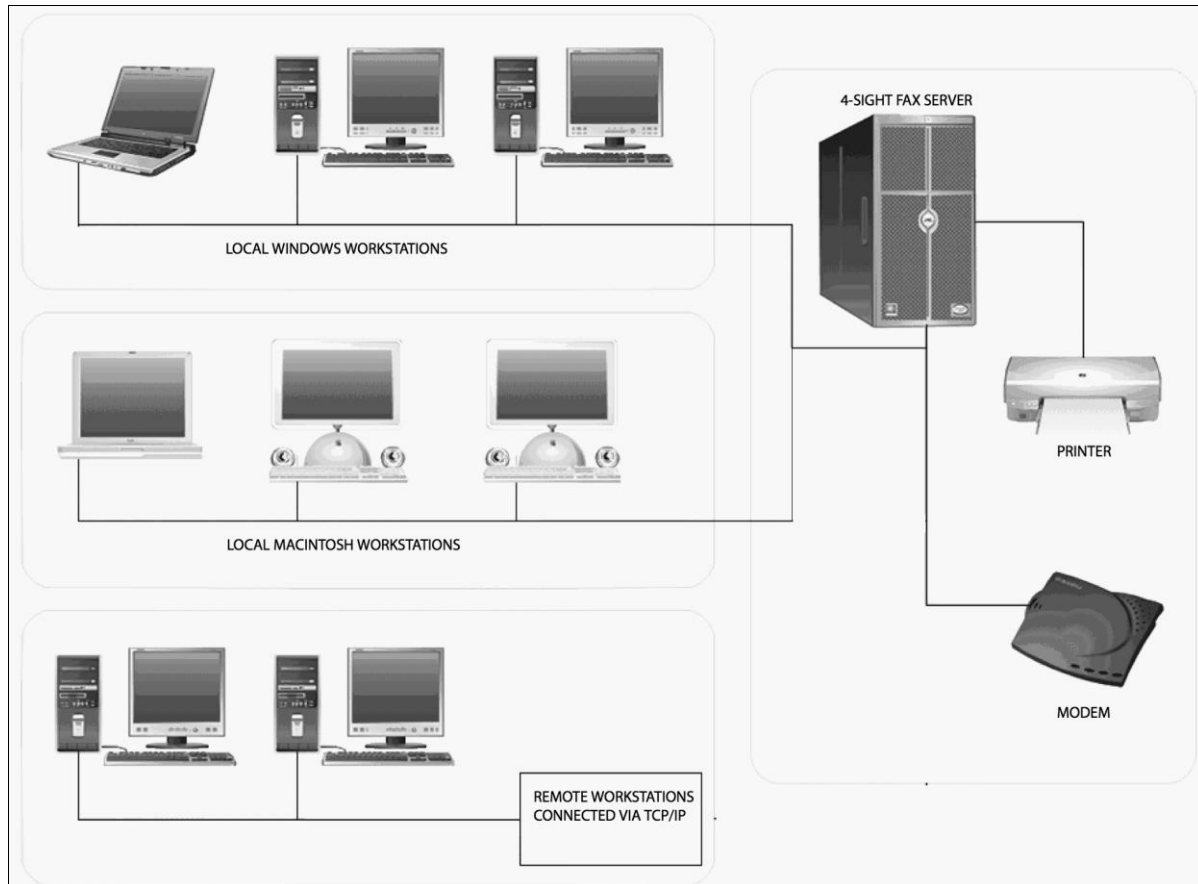
### **Why do I receive a 10250 error?**

*This is the error returned for "Demo Expired".*

*In the plug-in, FaxPack captures the current TIME from the plug-in on FMP startup. If the FMP programmer correctly issues our registration command, the plug-in no longer make the TIME comparison, because the developer is registered and has unrestricted access to using the plug-in. If the FMP developer has not issued a valid FaxPack registration, we allow the product to run in demonstration mode for 45 Minutes.*

*If you experience this error message, please ensure your registration information is correct.*

## 4-Sight FAX Sample Configuration



## Contact Information

Customer Service or Sales: 770-457-9400 or mail to: [sales@softsinc.com](mailto:sales@softsinc.com)

Technical Support: 770-457-9400 or mail to: [support@softsinc.com](mailto:support@softsinc.com)

For the latest versions of FaxPack for FMP, please visit:

<http://www.4sightfax.com/faxpack4d.html>

For the latest versions of 4-Sight FAX, please visit:

<http://www.4sightfax.com/download.html>

For 4-Sight FAX System requirements, please visit

<http://www.4sightfax.com/requirements.html>

# Index

Address Book, 5, 44  
Address1, 16, 48, 51  
Address2, 16, 48, 51  
Alternate, 16  
ArchiveKind, 40  
Area Code, 48, 51  
AreaCode, 16  
Attachment #, 38  
Category, 16, 47, 51  
City, 16, 48, 51  
Command Command Overview, 2  
Company, 15, 47, 50  
Configuration, 9, 14, 64  
ContactID, 44, 45, 47, 49, 50, 53  
Convert Type, 42  
Country, 16, 48, 51  
Country Code, 48, 51  
CountryCode, 15  
CoverPage, 12  
Custom, 16, 48, 51  
Dest File Path, 42  
DestKind, 15  
DestPath, 32  
DeveloperName, 10  
Email, 16  
Email Address, 15, 17, 48, 51  
End Page Number, 42  
Error Codes, 59  
Fax Number, 48, 51, 54, 55  
FilePath, 24  
First Name, 16, 47, 50  
From, 12  
FSFX\_AbandonMessage, 20  
FSFX\_AddComment, 18  
FSFX\_AddContact, 50  
FSFX\_AddEnclosure, 24  
FSFX\_AddRecipient, 15  
FSFX\_AddToBlockList, 9, 54, 58  
FSFX\_ConvertTiff, 42  
FSFX\_DeleteContact, 53  
FSFX\_DeleteFromBlockList, 9, 55  
FSFX\_GetContact, 44  
FSFX\_GetCoverPages, 31  
FSFX\_GetItemStatus, 21  
FSFX\_GetQueueListing, 9, 32  
FSFX\_GetTiffInfo, 41  
FSFX\_Login, 9  
FSFX\_ModifyContact, 47  
FSFX\_PreparePrint, 26  
FSFX\_Register, 10  
FSFX\_SendMessage, 19, 63  
FSFX\_ServerLogin, 29  
FSFX\_ServerLookup, 27  
FSFX\_StartMessage, 12, 63  
FSFX\_SwitchPrinter, 25  
FSFX\_Version, 11  
Full Name, 47  
FullName, 50  
FXFX\_ArchiveItem, 40  
Grayscale, 26  
Image Control, 41  
Installation, 7  
ItemID, 38, 40  
Kind, 32  
Last Name, 16, 47, 50  
Mac RegNumber, 10  
Message Control, 10  
Name, 15, 54  
Part, 38  
Password, 29  
Phone Number, 48, 51  
Postal Code, 16, 48, 51  
Printer Control, 25  
Priority, 13  
Product Registration, 2  
Province, 48, 51  
Queue, 38, 40  
Queue Access, 9, 32  
QueueTypeOrIndex, 21, 22  
Resolution, 26  
Result Code, 24  
Salutation, 16, 47, 50  
SendDateTime, 13  
Server AddressBook, 9  
Server Control, 27  
Server IP Address, 29  
Server Port, 29  
*Server Setup*, 9, 14, 17, 44, 55  
Smart Dialing, 48, 51  
SMART Dialing, 15, 16  
SPAbandonMsg, 20  
SPAddComment, 18  
SPAddContact, 50  
SPAddEnclosure, 24  
SPAddRecipient, 15  
SPAddToBlockList, 54  
SPArchiveItem, 40  
SPConvertTiff, 42  
SPDeleteContact, 53  
SPDeleteFromBlockList, 55  
SPGetContact, 44  
SPGetCoverPages, 31  
SPGetFaxTiff, 38  
SPGetItemStatus, 21  
SPGetQueueListing, 32, 37  
SPGetTiffInfo, 41  
SPGetVersion, 11  
SPModifyContact, 47

SPPreparePrint, 26, 63  
SPRegister, 10  
SPSendMessage, 19  
SPServerLogin, 29  
SPServerLookup, 27  
SPStartMessage, 12  
SPSwitchPrinter, 25, 63  
Start Page Number, 42  
State, 48, 51  
Subject, 12

Tiff File Path, 38, 41, 42  
Timeout, 27  
Title, 16, 47, 50  
TrialLogin, 29  
UniqueMessage ID, 21  
Username, 29  
Version Format, 11  
Voice, 16  
What's New, 2  
Win RegNumber, 10